

*Pattern Design Guides by Don McCunn***Knit Tops**

These instructions show how to create two variations of knit tops from the basic fitted sloper.

The instructions have been prepared for Don McCunn's online class "How to Make an Upper Torso (aka Bodice) Sloper."

(rev: 2/14/2009)

Copyright © 2009 by Donald H. McCunn

- You may copy this Pattern Design Guide for your own individual use.
- You may not distribute or sell copies of the instructions to others including friends, club members, students, or clients.
- You may sell garments made using these instructions without any restrictions.

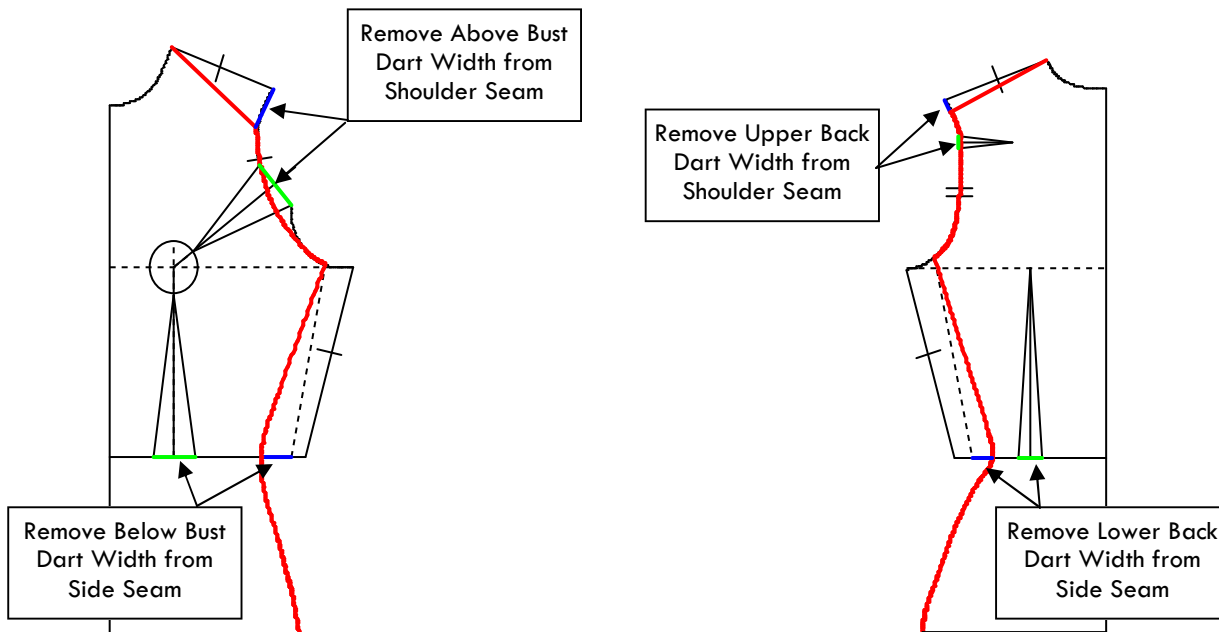
Design Enterprises of San Francisco
1007 Castro Street, San Francisco, CA 94114
(415) 282-8813 || Website: Patternmaking-Classes.com
Yahoo Groups: <http://groups.yahoo.com/group/How-to-Make-Sewing-Patterns>
<http://groups.yahoo.com/group/Patternmaking-Classes>

Knit Tops

by Don McCunn

Contents	
Introduction	2
Patterns and Sewing Instructions	3

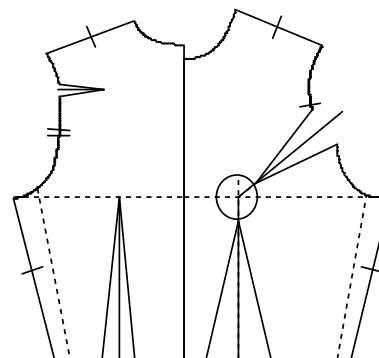
Creating Slopers for Knits



My initial research for converting Slopers for woven fabrics to knits indicates the following:

- Remove the shaping of darts for above the bust by increasing the angle of the shoulder seam.
- Remove the shaping for darts below the bust from the side seam.
- There should be no ease at the bust, waist, or hip level.

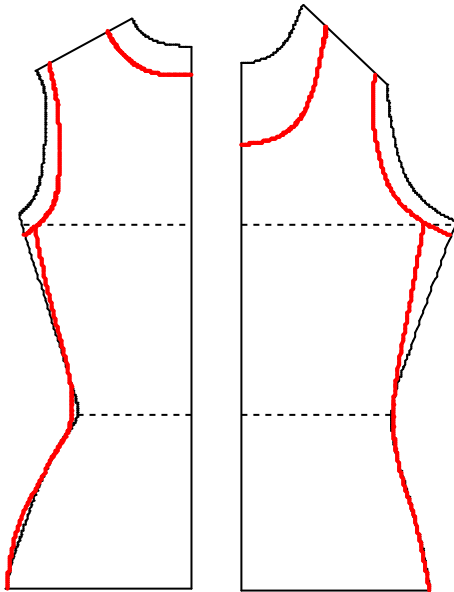
Use the chart below to determine where the body is located within the Slopers. In the illustrations above, the location of the body at the side seam is indicated by the dotted lines. When you measure the pattern at the waist, do not include the dart widths.



	Pattern Width	Body	Difference	Divide by	Width to Subtract
Bust		Bust/2: _____		2	#1: _____
Waist		Waist/2: _____		2	#2: _____

Knit Tops, cont'd

Patterns for the Camisole



When you create a knit pattern, it will obviously depend on the stretch of the fabric you are using. So you should always do a trial baste before you do the final sewing. I used 1/2" (12mm) seam allowances. Center Front and Center Back are cut on the fold. I used red crochet elastic for the neck and armscye.

With this pattern and fabric I discovered that the side seam needed to be taken in a little coming closer to the Above Bust measurement at the side seam.

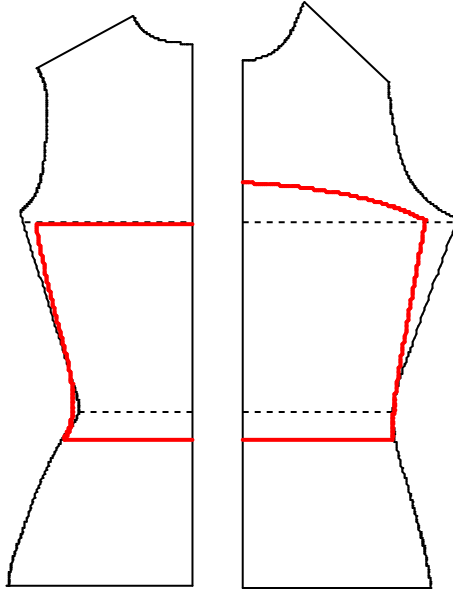
Sewing the Camisole

1. Cut the fabric using the patterns.
2. Pin the front to the back, right sides together.
3. Sew the side seams using a 1mm zigzag 3mm length.
4. Turn the hem and sew with a 2mm zigzag 2mm length.
5. Pin the elastic crochet trim to the good side of the knit fabric around the neck opening with the decorative edge facing the body of the garment.
6. Sew with a 2mm zigzag close to the decorative edge.
7. Trim the seam allowance close to the zigzag.
8. Turn the elastic trim to the inside of the Camisole and hand baste so the decorative edge shows on the front of the garment.
9. From the inside, sew the elastic to the body of the garment with a zigzag stitch. The triple stretch zigzag is nice for this topstitching.
10. Use the same trim technique for the armscyes.

For those of you familiar with bra sewing techniques, that is what I was using.

Knit Tops, cont'd

Patterns for the Strapless Camisole



For this strapless Camisole I opted to go slightly below the natural waist. I used the same sewing techniques as described previously.